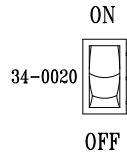
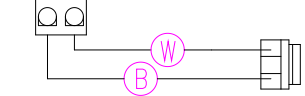


12V Light (White 2-Pin)



**SYSTEM FUSE**

RED INDICATOR LIGHT

**HIGH-LIMIT**

RED INDICATOR LIGHT

**PUMP 1 FUSE**

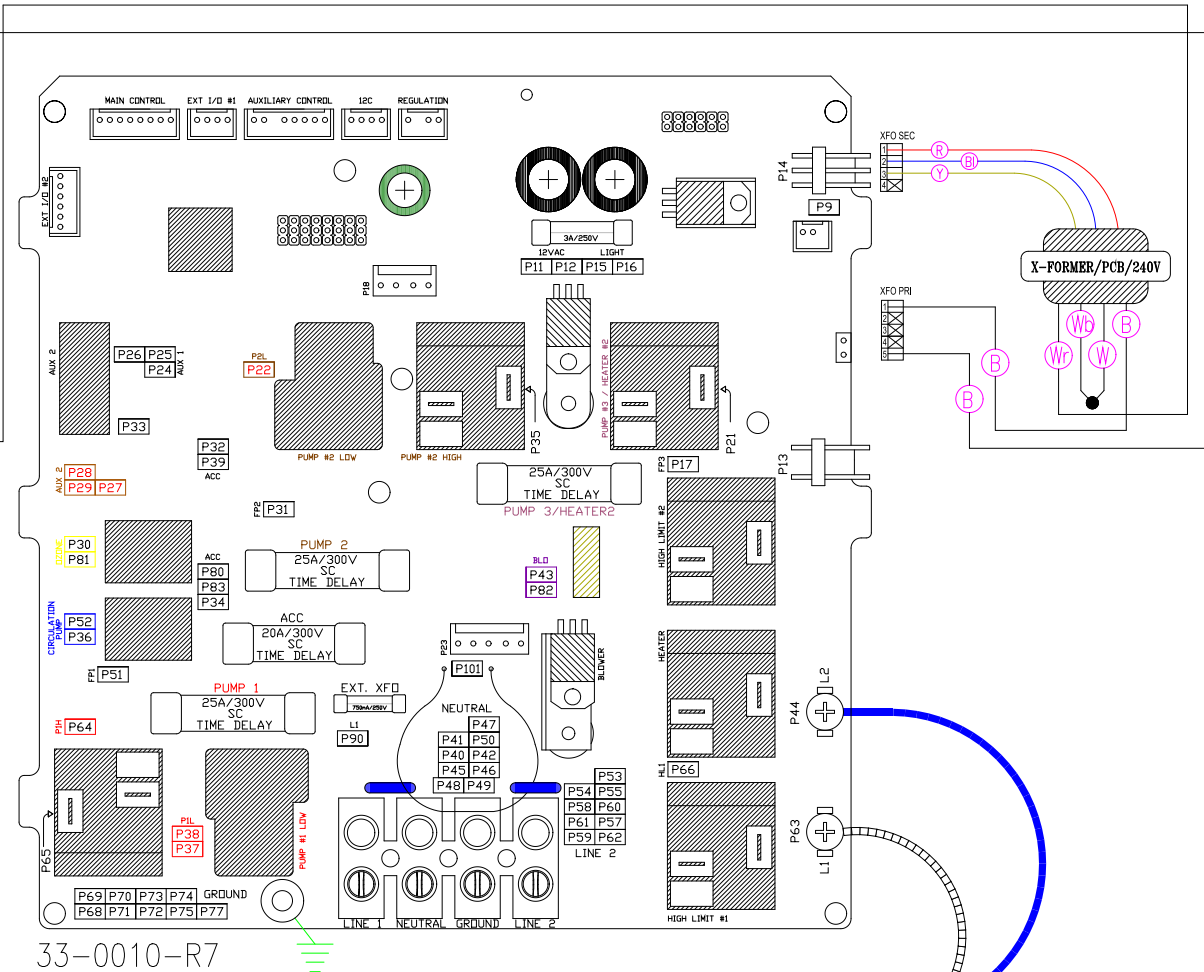
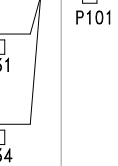
RED INDICATOR LIGHT

**PUMP 2 FUSE**

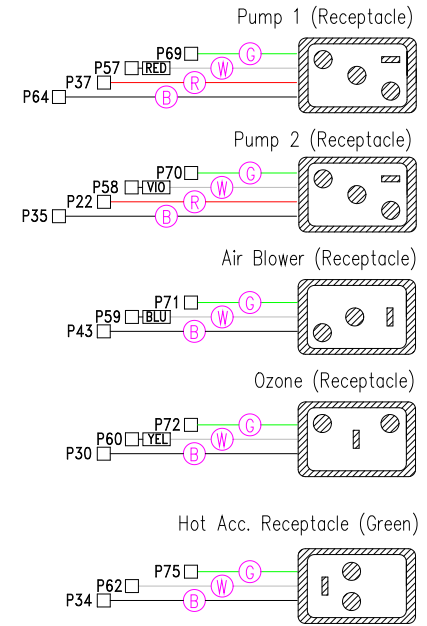
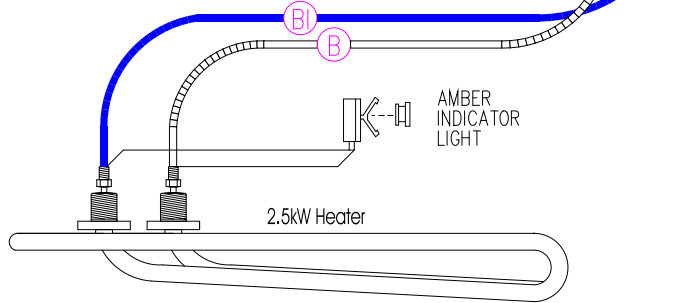
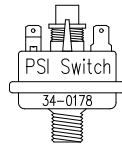
RED INDICATOR LIGHT

**AIR/CIRC/OZ FUSE**

RED INDICATOR LIGHT



33-0010-R7



**HYDRO-QUIP**  
CORONA, CA (909) 273-7575

Manufacture Notes:

Approved By:

Dwg. No. C222A1-KPQUY68-B

Drawn BH Rev 8

Wire Color Code

Dual Heater Connection: Standard Heater Connected at Factory.

For Remote Heater: Disconnect Factory Installed Heater at 9-Pin Connection. Install Remote Heater Bracket and Secure 9-Pin Receptacle. Connect Remote Heater Externally.

Date 07.19.05

Diagram No. 4502

B - Black G - Green  
 Br - Brown BI - Blue  
 R - Red V - Violet  
 O - Orange W - White  
 Y - Yellow Gr - Gray